



NITROBERG® | OXYBERG®

Oxygen and Nitrogen Generators, Supply your own O₂ | N₂



Download full datasheets online

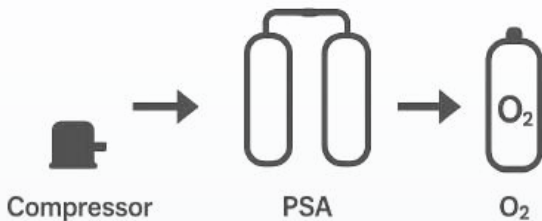


PSA OXYGEN GENERATOR – OXYBERG®

Reliable On-Site Oxygen Supply

PROCESS

The OXYBERG® Pressure Swing Adsorption (PSA) technology efficiently separates nitrogen molecules from compressed air, delivering a steady stream of high-purity oxygen.



Ambient Conditions and Apply Standard

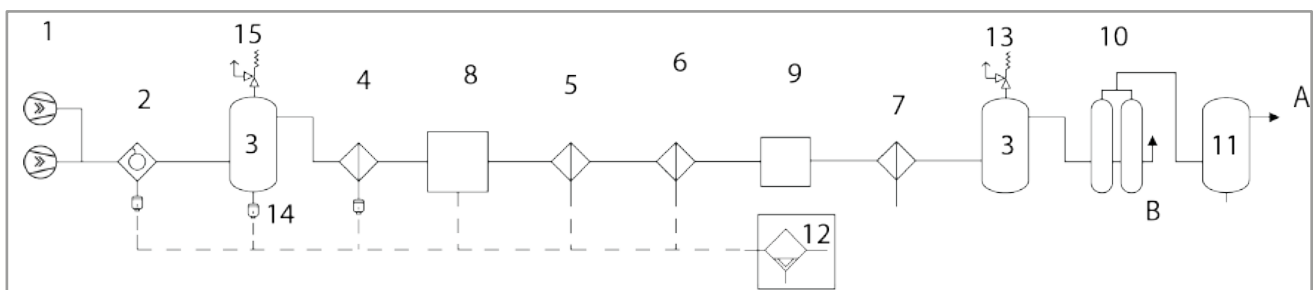
- Temperature range: +5°C to +40°C
- Electrical connection: 110-230 V/60-50 Hz
- Noise level: from 55 to max. 78 dB(A)
- Accordance with DIN ISO 13485:2003 & in accordance with European Directive 2014/68/EU

Compressed Air Specification

Temperature range: +5 to +40°C
 Air quality: ISO 8573.1, Class 1.4.1
 Operating pressure: 10 bar

ADVANTAGES:

- Customized solutions tailored to specific needs
- Compact, space-efficient system design
- Automatic operation for ease of use
- Mobile Oxygen supply for flexible deployment
- Digital surveillance for enhanced monitoring
- Ideal for locations without infrastructure
- Reduced operating costs for long-term savings
- High availability ensuring uninterrupted supply
- Return on Investment in less than 36 months
- Optional CO₂/CO and O₂ measurement modules

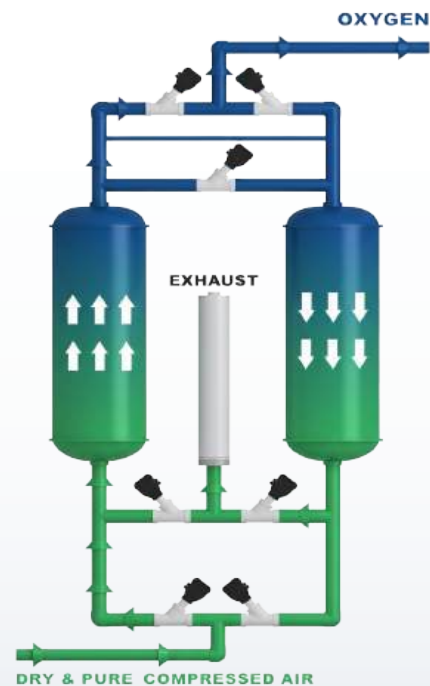


- | | | |
|-----------------------------------|--|-------------------------------------|
| 1. Screw Compressors - Multistage | 7. Dust filter | 11. Compressed Oxygen tanks |
| 2. Water Separator | 8. DRYBERG® - Refrigeration/Adsorption Dryer | 12. OWAMAT® - Oil / Water Separator |
| 3. Compressed air tanks | 9. Activated Carbon Tower | 13. Safety valves |
| 4. Pre filter | 10. OXYBERG® - PSA Oxygen Generator | 14. BEKOMAT® |
| 5. Fine filter | | A. Oxygen |
| 6. Super fine filter | | B. Nitrogen-enriched air outlet |

PSA OXYGEN GENERATOR – OXYBERG®

PRODUCTION PRINCIPLE

The OXYBERG® Oxygen Generator operates with two twin vessels filled with high-quality molecular sieve (zeolite). When compressed air enters a vessel, Nitrogen is adsorbed by the zeolite, while Oxygen flows directly into the buffer tank. Once the first vessel reaches Nitrogen saturation, the process automatically switches to the second vessel, releasing the adsorbed Nitrogen into the atmosphere. This twin-column PSA system offers all the advantages of a fully integrated in-house oxygen production solution.



Product Specification

Description: Twin-column, heavy-duty oxygen generator for continuous 24/7 operation under full load in healthcare environments.

Column vessels: Built per Pressure Equipment Directive, powder-coated, and approved by the European Supervisory Board for long-term reliability.

Adsorbent material: High-quality zeolite molecular sieve with top energy efficiency and minimal pressure drop.

Process valves: Durable stainless steel pneumatic valves, Made in Germany, ensuring long service life.

Piping: Stainless steel press-fitted piping for leak-free and durable performance.

Instrumentation & Measurement: Includes Zirconium O₂ analyzer, HMI outlet pressure display, full-pressure indicators, and ready-to-connect wiring.

Control & Monitoring

- Multifunctional color touch control panel with 4" or 7" HMI, Siemens-made
- Automatic Start/Stop with dedicated buttons
- Real-time display of purity, outlet pressure, operating hours, and all sensor values
- Display in metric or imperial units
- Trend Display: visualize all measurements over 24 hours
- Alarm Management: full audit trail, acknowledgment, deletion with timestamp, permanent history
- Purity Adjustment: change oxygen purity at the push of a button
- Access Management: three hierarchy levels for secure control
- Service Reminders: automatic notifications for periodic maintenance
- Long-Term Data Storage for process analysis
- Automatic Restart option after power outages

APPLICATION FIELDS

For Our PSA Oxygen Generator

MEDICAL



OXYBERG® Medical Oxygen Generators provide hospitals and clinics with a continuous supply of high-purity oxygen through the Pressure Swing



Adsorption (PSA) process, which extracts oxygen directly from the ambient air. Compared to traditional cylinders and bulk tanks, PSA systems deliver a safer, more reliable, and cost-efficient solution by eliminating transportation and storage requirements.

GLASS & NEON FACTORY



PSA Oxygen Generators ensure a constant on-site supply of high-purity oxygen, essential for glass manufacturing and neon



production. The use of oxygen enhances flame temperature, improves melting efficiency and provides better control over production processes — resulting in higher-quality outputs and reduced energy consumption.

METAL INDUSTRY



PSA Oxygen Generators are crucial in metal processing applications such as cutting, welding, steelmaking, annealing, heat treatment,



powder metallurgy, and foundry operations. They guarantee a stable on-site oxygen supply, improve process efficiency, reduce operational costs, and enhance the precision and quality of finished metal products.

DRINKING-WATER TREATMENT



In water treatment facilities, oxygen plays a vital role in oxidation, purification, and biological treatment processes. PSA Oxygen



Generators deliver a continuous, cost-effective, and environmentally friendly oxygen supply that supports the production of safe, clean, and high-quality drinking water for municipal and industrial systems.

ECOLOGY FISH FARMING



PSA Oxygen Generators are key to modern aquaculture operations. They maintain optimal dissolved oxygen levels, promote biological



filtration, and reduce environmental impacts. The stable oxygen supply enhances fish growth, improves feed efficiency, and increases overall productivity and sustainability of fish farming systems.

BIOGAS PLANTS



In biogas production, PSA Oxygen Generators support aerobic and anaerobic digestion, odor control, waste-water treatment, and biogas



upgrading. The consistent oxygen flow improves process stability, enhances gas yield and methane concentration, and optimizes energy recovery in renewable energy systems.

MINING AND MINERAL PROCESSING



PSA Oxygen Generators are widely applied in mining and mineral industries for oxidation, leaching, flotation, and wastewater treatment.



They improve metallurgical efficiency, accelerate reaction kinetics, and ensure a reliable supply of oxygen for critical chemical and thermal processes.

WASTEWATER TREATMENT



PSA Oxygen Generators support aerobic biological processes in wastewater treatment, enhancing microbial activity and improving effluent



quality. With a continuous on-site Oxygen supply, they ensure efficient, sustainable, and cost-effective purification for industrial and municipal systems.

OXYGEN Complete Plant

OXYBERG® Plug and Play

The OXYBERG® PSA technology provides an efficient and cost-effective solution for on-site Oxygen generation. This reliable system is primarily used in medical facilities, pharmaceutical production, and water treatment applications. Using advanced Pressure Swing Adsorption (PSA) and specially engineered zeolite adsorbents, the system separates compressed air into its Nitrogen and Oxygen components. The produced Oxygen is available in flow capacities from 1 to 280 Nm³/h and with a purity level of 90–95%, depending on the application.

GENERATOR FOR MEDICAL O₂

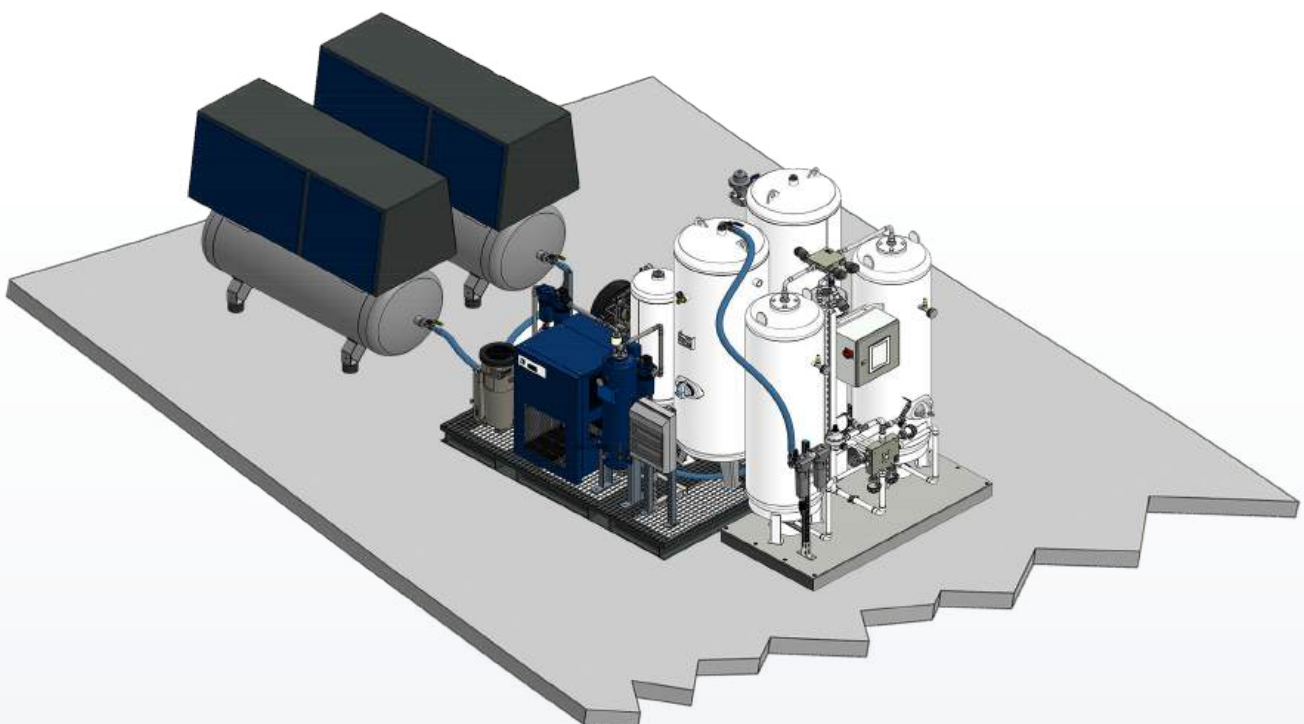
The OXYBERG® Med series offers energy-optimized Oxygen generation designed specifically for healthcare environments, ensuring constant and stable Oxygen quality for continuous medical use.

ISO 13485 and CE certification

Our company proudly holds CE Certification No. 2912, in compliance with the Pressure Equipment Directive (PED) 2014/68/EU. We are also in the final stages of obtaining ISO 13485 certification, highlighting our commitment to maintaining the highest standards of quality management for medical devices.

The Complete Oxygen Plant, Skid Mounted

- A) Compressed Air Station
- B) Air treatment to ISO 8573-1 Class 1.4.1 (1.2.1)
- C) Compressed Air Buffer Tank
- D) PSA Oxygen Generator, OXYBERG®
- E) Product Oxygen Tank
- F) Boosting Station / Cylinder Filling Station





Technical Data of PSA Oxygen Generator OXYBERG® - Capacity (Nm³/h)						
Model	Oxygen Purity	90%	92%	93%	94%	95%
OXYBERG® 500	O ₂ , Nm³/h	2.1	1.9	1.7	1.6	1.5
	Comp.air, Nm³/h	23.1	20.9	18.7	17.6	16.5
	Oxygen vessel	90	90	90	90	90
	Comp. air vessel	150	150	150	150	150
OXYBERG® 600	O ₂ , Nm³/h	2.9	2.6	2.4	2.3	2.2
	Comp.air, Nm³/h	31.9	28.6	26.4	25.3	24.2
	Oxygen vessel	90	90	90	90	90
	Comp. air vessel	150	150	150	150	150
OXYBERG® 700	O ₂ , Nm³/h	4.9	4.5	4.2	3.9	3.8
	Comp.air, Nm³/h	53.9	49.5	46.2	42.9	41.8
	Oxygen vessel	150	150	150	150	150
	Comp. air vessel	250	250	250	250	250
OXYBERG® 800	O ₂ , Nm³/h	6.1	5.7	5.5	5.2	4.9
	Comp.air, Nm³/h	67.1	62.7	60.5	57.2	53.9
	Oxygen vessel	150	150	150	150	150
	Comp. air vessel	350	350	350	350	350
OXYBERG® 900	O ₂ , Nm³/h	9.2	8.5	8.2	7.7	7.3
	Comp.air, Nm³/h	101.2	93.5	90.2	84.7	80.3
	Oxygen vessel	350	350	350	350	350
	Comp. air vessel	500	500	500	500	500
OXYBERG® 1000	O ₂ , Nm³/h	12.4	11.6	11.1	10.5	10.1
	Comp.air, Nm³/h	136.4	127.6	122.1	115.5	111.1
	Oxygen vessel	500	500	500	500	500
	Comp. air vessel	750	750	750	750	750
OXYBERG® 1100	O ₂ , Nm³/h	13.8	13.3	12.8	12.4	12.1
	Comp.air, Nm³/h	151.8	146.3	140.8	136.4	133.1
	Oxygen vessel	500	500	500	500	500
	Comp. air vessel	750	750	750	750	750
OXYBERG® 1200	O ₂ , Nm³/h	18.9	18.1	17.4	16.8	15.9
	Comp.air, Nm³/h	207.9	199.1	191.4	184.8	174.9
	Oxygen vessel	750	750	750	750	750
	Comp. air vessel	1,000	1,000	1,000	1,000	1,000
OXYBERG® 1300	O ₂ , Nm³/h	24.8	23.3	22.1	21.1	20.3
	Comp.air, Nm³/h	272.8	256.3	243.1	232.1	223.3
	Oxygen vessel	750	750	750	750	750
	Comp. air vessel	1,500	1,500	1,500	1,500	1,500
OXYBERG® 1400	O ₂ , Nm³/h	33.8	33.2	31.4	30.1	28.8
	Comp.air, Nm³/h	371.8	365.2	345.4	331.1	316.8
	Oxygen vessel	1,000	1,000	1,000	1,000	1,000
	Comp. air vessel	2,000	2,000	2,000	2,000	2,000
OXYBERG® 1500	O ₂ , Nm³/h	44.6	43.1	41.6	40.5	39.1
	Comp.air, Nm³/h	490.6	474.1	457.6	445.5	430.1
	Oxygen vessel	1,500	1,500	1,500	1,500	1,500
	Comp. air vessel	3,000	3,000	3,000	3,000	3,000
OXYBERG® 1600	O ₂ , Nm³/h	55.3	53.2	51.3	49.6	48.2
	Comp.air, Nm³/h	608.3	585.2	564.3	545.6	530.2
	Oxygen vessel	2,000	2,000	2,000	2,000	2,000
	Comp. air vessel	4,000	4,000	4,000	4,000	4,000
OXYBERG® 1700	O ₂ , Nm³/h	65.8	64.4	62.1	61.4	59.8
	Comp.air, Nm³/h	723.8	708.4	683.1	675.4	657.8
	Oxygen vessel	2,000	2,000	2,000	2,000	2,000
	Comp. air vessel	4,000	4,000	4,000	4,000	4,000
OXYBERG® 1800	O ₂ , Nm³/h	89.2	86.2	83.2	81.0	78.2
	Comp.air, Nm³/h	981.2	948.2	915.2	891.0	860.2
	Oxygen vessel	3,000	3,000	3,000	3,000	3,000
	Comp. air vessel	5,000	5,000	5,000	5,000	5,000
OXYBERG® 1900	O ₂ , Nm³/h	110.6	106.4	102.6	99.2	96.4
	Comp.air, Nm³/h	1,216.6	1,170.4	1,128.6	1,091.2	1,060.4
	Oxygen vessel	4,000	4,000	4,000	4,000	4,000
	Comp. air vessel	6,000	6,000	6,000	6,000	6,000
OXYBERG® 2000	O ₂ , Nm³/h	131.6	128.8	124.2	122.8	119.6
	Comp.air, Nm³/h	1,447.6	1,416.8	1,366.2	1,350.8	1,315.6
	Oxygen vessel	5,000	5,000	5,000	5,000	5,000
	Comp. air vessel	8,000	8,000	8,000	8,000	8,000

*All values apply at 7 bar inlet pressure and 20°C ambient temperature.

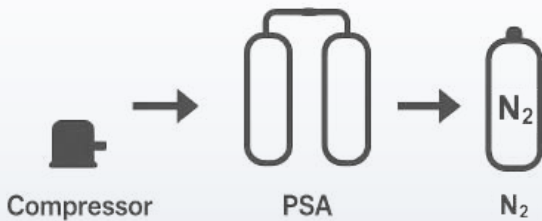
*If a bigger size or customized plant is needed, please get in touch with us.

PSA NITROGEN GENERATOR – NITROBERG®

Reliable and Efficient On-Site Nitrogen Production

PROCESS

The NITROBERG® PSA system delivers nitrogen with a purity range of 97% to 99.9995% and flow capacities between 0.9 and 2200 Nm³/h. Engineered for continuous operation, it provides a stable and cost-effective nitrogen supply for diverse industrial applications.



Ambient conditions and Apply Standard

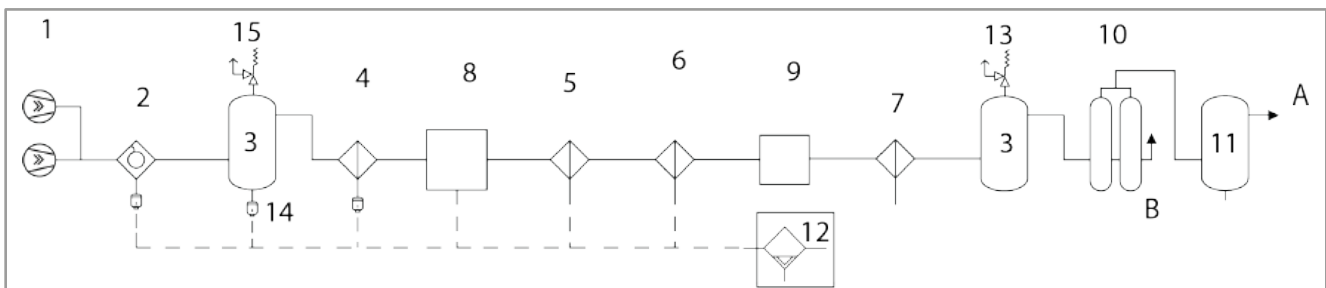
- Temperature range: +5°C to +40°C
- Electrical connection: 110-230 V/60-50 Hz
- Noise level: from 55 to max. 78 dB(A)
- Accordance with DIN ISO 13485:2003 & European Directive 68/2014/EU

BENEFITS:

- Plug and Play, constant Nitrogen supply
- Constant measurement of Nitrogen purity
- Savings from the very first minute
- Low-maintenance, compact design
- Ultra Pure N₂ => up to 99.9995% (1ppm O₂)
- Longest lifetime of high-quality CMS

Compressed air specification

Temperature range: +5 to +40°C
 Air quality: ISO 8573.1, Class 1.4.1
 Operation pressure: 10 bar



- | | | |
|-----------------------------------|---|-------------------------------------|
| 1. Screw Compressor (Multi stage) | 7. Dust filter | 11. Compressed Nitrogen tanks |
| 2. Water Separator | 8. DRYBERG - Refrigeration/Adsorption Dryer | 12. OWAMAT® - Oil / Water Separator |
| 3. Compressed air tanks | 9. Activated Carbon Tower | 13. Safety valves |
| 4. Pre filter | 10. NITROBERG® - PSA Nitrogen Generator | 14. BEKOMAT® |
| 5. Fine filter | | A. Nitrogen |
| 6. Super fine filter | | B. Oxygen-enriched air outlet |

PSA NITROGEN GENERATOR – NITROBERG®

PRODUCTION PRINCIPLE

The NITROBERG® PSA Nitrogen Generator operates with two adsorption vessels filled with Carbon Molecular Sieve (CMS). During operation, oxygen is adsorbed on the CMS surface while nitrogen passes through to the buffer tank. When one vessel approaches oxygen saturation, the process automatically switches to the second vessel, releasing the adsorbed oxygen from the first tower into the atmosphere. This twin-column PSA design ensures continuous, fully automated nitrogen generation for industrial use.



Product Specification

Description: Twin-column, heavy-duty nitrogen generator for 24/7 full-load operation.

Column Vessels: Manufactured according to the Pressure Equipment Directive (PED) and certified by the German Technical Supervisory Board (TÜV). Built for high durability and safe continuous operation.

Adsorbent Material: High-quality Carbon Molecular Sieve (CMS) with a service life of over 10 years. Optimized for low differential pressure and energy-efficient air-to-nitrogen ratios. Classified as non-consumable, minimizing replacement costs.

Piping: All process piping made of galvanized or stainless steel (Viga press-fit type).

Ensures maximum strength and leak-free performance.

Instrumentation & Measurement: High-precision Nitrogen purity analyzer with long-life Zirconium sensor, An outlet pressure sensor and display on the HMI.

Pressure indicators at inlet, outlet, and both columns vessels

Ready-to-connect with an electrical cable and plug

Control & Monitoring

The Siemens 7" color touch HMI offers advanced, user-friendly control and real-time process visualization.

- Automatic Continuous Operation with Start/Stop control
- Real-time display of purity, pressure, operating hours, and all measurement data
- Measurement values in metric or imperial units
- Trend display for continuous monitoring
- Comprehensive alarm management with time/date-stamped log and permanent history
- Adjustable purity settings via one-touch control
- Multi-level access management for secure operation
- Automatic maintenance reminders
- Long-term process data storage for performance tracking

APPLICATION FIELDS GENERATOR

For Our PSA Nitrogen Generator

FOOD AND BEVERAGE



PSA Nitrogen Generators provide a reliable, on-site source of high-purity Nitrogen is essential for the food and beverage industry.



They preserve the freshness of packaged foods, improve beverage quality, and support various food processing operations. Their use enhances product quality, extends shelf life, and boosts efficiency in manufacturing.

OIL AND GAS INDUSTRY



PSA Nitrogen Generators are vital in the oil and gas industry, supporting drilling, enhanced oil recovery, pipeline maintenance, gas storage, refining, and shutdown operations. They provide a continuous, on-site supply of high-purity Nitrogen, improving safety, efficiency, and cost-effectiveness across various applications.



MANUFACTURING PLASTIC INDUSTRY



PSA Nitrogen Generators are crucial in the plastic manufacturing industry, supporting production, molding, extrusion, and recycling processes. They create controlled atmospheres, prevent oxidation, and facilitate purging, improving efficiency, quality, and sustainability in plastic manufacturing operations.



ELECTRONICS AND COMMUNICATION



PSA Nitrogen Generators are essential in the electronics and communication industry, supporting the production, assembly, testing, and protection of electronic components. They create controlled atmospheres, prevent oxidation and regulate moisture levels, enhancing the reliability, quality, and performance of electronic devices.



LASER CUTTING INDUSTRY



PSA Nitrogen Generators are essential in the laser cutting industry, offering a continuous and controlled supply of high-purity Nitrogen. They enhance cut quality, improve efficiency, and ensure a safer working environment. Nitrogen prevents oxidation, supports precise cutting, and optimizes performance across various materials.



VEGETABLE OILS



PSA Nitrogen Generators are essential in vegetable oil production, processing, and storage. They prevent oxidation, extend shelf life, and enhance oil quality. Their versatility makes them invaluable for creating controlled atmospheres across various stages of the vegetable oil industry.



CHEMICALS INDUSTRY



PSA Nitrogen Generators are essential in the chemicals industry, providing a reliable on-site source of high-purity Nitrogen. They support inerting, blanketing, purging, and other processes, enhancing safety, efficiency, and quality in chemical manufacturing and processing operations.



PHARMACEUTICAL



PSA Nitrogen Generators are essential in the pharmaceutical industry, providing a reliable on-site source of high-purity Nitrogen. They support inerting, blanketing, purging, and analytical processes, enhancing safety, efficiency, and quality in manufacturing, storage, and quality control operations.



NITROGEN Complete Package

NITROBERG® Plug and Play Systems

NITROBERG® Compact systems produce Nitrogen with a purity of up to 5.0 or 6.0 with an even, high pressure booster. All components are combined on a compact platform to form a plug and play system. This ensures easier transport, immediate installation and immediate start-up on site with extremely low power & compressed air consumption.

PROCEEDINGS

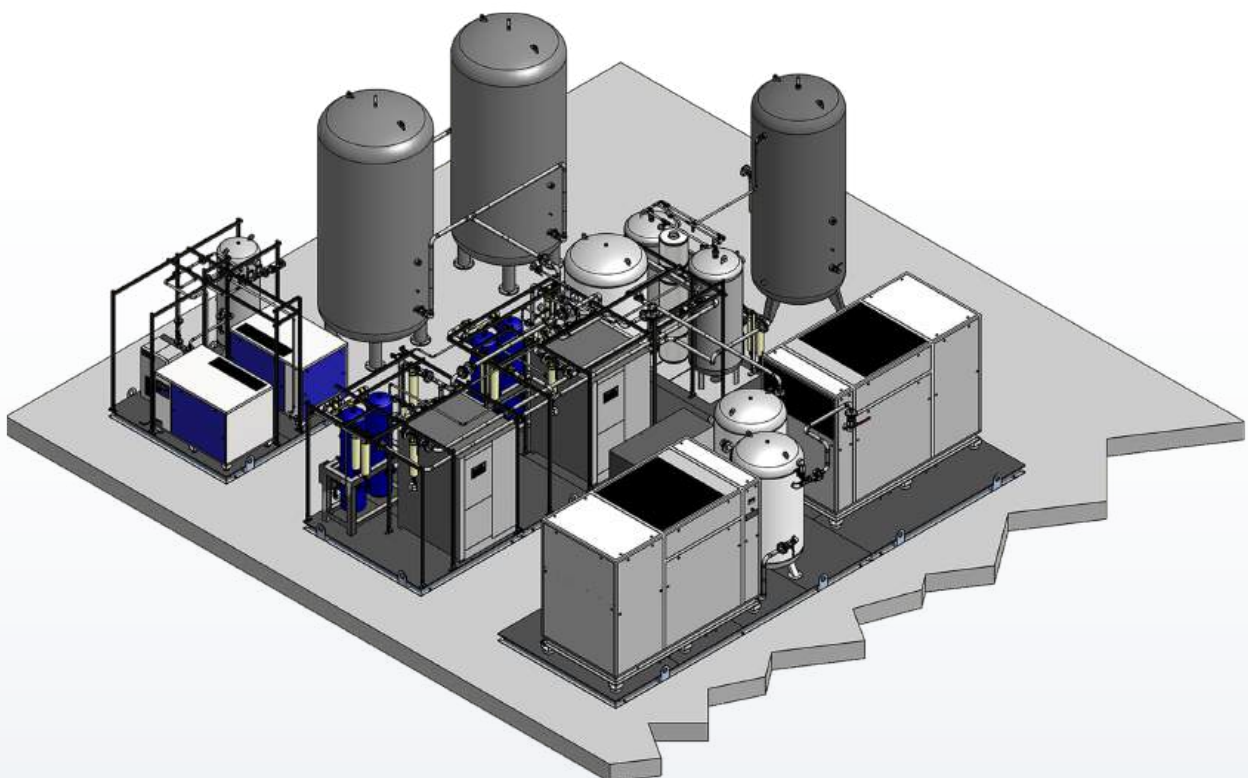
The interaction of the NITROBERG® generators with the energy-saving air distribution system maximizes the efficiency of Nitrogen production. The Nitrogen from the NITROBERG® system will be cleaned from O₂ and the N₂ purity are increased to up to 99.9999% Thanks to our innovative system, you can produce ultra-pure Nitrogen with significantly smaller air compressors!

The Complete Nitrogen plant, Skid-mounted

- A) Compressed Air Station
- B) Air Treatment – ISO 8573-1 Class 1.2.1
- C) Compressed Air Buffer Tank
- D) PSA Nitrogen Generator – NITROBERG®
- E) Product Nitrogen Tank
- F) Boosting / Cylinder Filling Station

ADVANTAGES:

- Plug & Play system - immediately operational
- Increased efficiency, low-maintenance design
- High quality, worldwide service
- Small footprint, easy handling
- Innovated air distribution system.
- **Automatic blending Air factor 2.9 at 99.5%**
(1 Nm³ N₂ = 2.9 Nm³ compressed air)
- Constant measurement of N₂ purity and the outlet pressure
- Trend display, recipe management
- Data backup, multilingualism Remote Control, Query & Control, E-mail alert, Industry 4.0 - optional
- Protect the machine from moisture with a PDP sensor for inlet compressed air - optional





Technical Data of PSA Nitrogen Generator NITROBERG® - Capacity (Nm ³ /h)									
Model	Nitrogen Purity Quality grade Residual O ₂ (PPM)	97%	98%	99%	99.5%	99.9%	99.99%	99.995%	99.999%
NITROBERG® 500	N ₂ , Nm ³ /h	10.7	8.6	7.1	6.2	4.1	2.2	1.7	1.2
	Comp.air, Nm ³ /h	24.6	19.8	18.5	18.0	13.9	10.1	8.8	7.7
	Nitrogen vessel	90	90	90	90	90	90	90	90
	Comp. air vessel	90	90	90	90	90	90	90	90
NITROBERG® 600	N ₂ , Nm ³ /h	19.3	15.5	12.8	11.2	7.4	4.0	3.1	2.2
	Comp.air, Nm ³ /h	44.3	35.6	33.2	32.4	25.1	18.2	15.9	13.8
	Nitrogen vessel	90	90	90	90	90	90	90	90
	Comp. air vessel	150	150	150	150	150	150	150	150
NITROBERG® 700	N ₂ , Nm ³ /h	30.0	24.1	19.9	17.4	11.5	6.2	4.8	3.4
	Comp.air, Nm ³ /h	68.9	55.4	51.7	50.3	39.0	28.3	24.8	21.5
	Nitrogen vessel	150	150	150	150	150	150	150	150
	Comp. air vessel	250	250	250	250	250	250	250	250
NITROBERG® 800	N ₂ , Nm ³ /h	42.8	34.4	28.4	24.8	16.4	8.8	6.8	4.8
	Comp.air, Nm ³ /h	98.4	79.1	73.8	71.9	55.8	40.5	35.4	30.7
	Nitrogen vessel	250	250	250	250	250	250	250	250
	Comp. air vessel	250	250	250	250	250	250	250	250
NITROBERG® 900	N ₂ , Nm ³ /h	65.9	53.0	43.7	38.2	25.3	13.6	10.5	7.4
	Comp.air, Nm ³ /h	151.6	121.8	113.7	110.8	85.9	62.3	54.5	47.3
	Nitrogen vessel	350	350	350	350	250	250	250	250
	Comp. air vessel	500	500	500	500	500	500	500	500
NITROBERG® 1000	N ₂ , Nm ³ /h	89.9	72.2	59.6	52.1	34.4	18.5	14.3	10.1
	Comp.air, Nm ³ /h	206.7	166.2	155.1	151.0	117.1	85.0	74.3	64.5
	Nitrogen vessel	500	500	500	500	500	500	500	500
	Comp. air vessel	500	500	500	500	500	500	500	500
NITROBERG® 1100	N ₂ , Nm ³ /h	117.7	94.6	78.1	68.2	45.1	24.2	18.7	13.2
	Comp.air, Nm ³ /h	270.7	217.6	203.1	197.8	153.3	111.3	97.2	84.5
	Nitrogen vessel	750	750	750	750	750	750	750	750
	Comp. air vessel	750	750	750	750	750	750	750	750
NITROBERG® 1200	N ₂ , Nm ³ /h	145.5	117.0	96.6	84.3	55.8	29.9	23.1	16.3
	Comp.air, Nm ³ /h	334.7	269.0	251.1	244.5	189.6	137.6	120.2	104.4
	Nitrogen vessel	750	750	750	750	750	750	750	750
	Comp. air vessel	1,000	1,000	1,000	1,000	1,000	1,000	1,000	1,000
NITROBERG® 1300	N ₂ , Nm ³ /h	205.4	165.1	136.3	119.0	78.7	42.2	32.6	23.0
	Comp.air, Nm ³ /h	472.5	379.8	354.4	345.2	267.6	194.3	169.7	147.5
	Nitrogen vessel	1,500	1,500	1,500	1,500	1,000	1,000	1,000	1,000
	Comp. air vessel	2,000	2,000	2,000	2,000	1,500	1,500	1,500	1,500
NITROBERG® 1400	N ₂ , Nm ³ /h	286.8	230.5	190.3	166.2	109.9	59.0	45.6	32.2
	Comp.air, Nm ³ /h	659.5	530.1	494.7	481.9	373.6	271.2	236.9	205.8
	Nitrogen vessel	2,000	2,000	2,000	2,000	1,500	1,500	1,500	1,500
	Comp. air vessel	3,000	3,000	3,000	3,000	2,000	2,000	2,000	2,000
NITROBERG® 1500	N ₂ , Nm ³ /h	402.3	323.4	267.0	233.1	154.2	82.7	63.9	45.1
	Comp.air, Nm ³ /h	925.3	743.7	694.1	676.0	524.1	380.5	332.4	288.8
	Nitrogen vessel	3,000	3,000	3,000	3,000	2,000	2,000	2,000	2,000
	Comp. air vessel	4,000	4,000	4,000	4,000	3,000	3,000	3,000	3,000
NITROBERG® 1600	N ₂ , Nm ³ /h	494.9	379.7	328.4	286.7	189.6	101.7	78.6	55.5
	Comp.air, Nm ³ /h	1,138.2	914.8	853.7	831.5	644.7	468.0	408.8	355.2
	Nitrogen vessel	4,000	4,000	4,000	4,000	3,000	3,000	3,000	3,000
	Comp. air vessel	6,000	6,000	6,000	6,000	4,000	4,000	4,000	4,000
NITROBERG® 1700	N ₂ , Nm ³ /h	579.3	465.6	384.4	335.7	222.0	119.1	92.0	65.0
	Comp.air, Nm ³ /h	1,332.5	1,071.0	999.5	973.5	754.8	547.9	478.6	415.8
	Nitrogen vessel	4,000	4,000	4,000	4,000	3,000	3,000	3,000	3,000
	Comp. air vessel	6,000	6,000	6,000	6,000	4,000	4,000	4,000	4,000
NITROBERG® 1800	N ₂ , Nm ³ /h	694.9	606.8	459.6	378.8	295.8	167.2	122.6	85.1
	Comp.air, Nm ³ /h	1,822.9	1,465.1	1,367.4	1,331.8	1,032.6	749.6	654.8	568.9
	Nitrogen vessel	5,000	5,000	5,000	5,000	3,000	3,000	3,000	3,000
	Comp. air vessel	8,000	8,000	8,000	8,000	6,000	6,000	6,000	6,000
NITROBERG® 1900	N ₂ , Nm ³ /h	974.9	783.5	646.9	564.9	373.5	200.4	154.9	109.3
	Comp.air, Nm ³ /h	2,242.2	1,802.1	1,681.9	1,638.1	1,270.1	922.0	805.4	699.7
	Nitrogen vessel	6,000	6,000	6,000	6,000	4,000	4,000	4,000	4,000
	Comp. air vessel	9,000	9,000	9,000	9,000	9,000	9,000	9,000	9,000
NITROBERG® 2000	N ₂ , Nm ³ /h	1,141.3	917.3	757.3	661.3	437.3	234.7	181.3	128.0
	Comp.air, Nm ³ /h	2,625.0	2,109.8	1,969.0	1,917.8	1,486.9	1,079.4	942.9	819.2
	Nitrogen vessel	6,000	6,000	6,000	6,000	4,000	4,000	4,000	4,000
	Comp. air vessel	10,000	10,000	10,000	10,000	10,000	10,000	10,000	10,000

*All values apply at 7 bar inlet pressure and 20°C ambient temperature.

*If the bigger size or customized plant is needed, please contact us.



SPECIAL PLANT

Plug-and-Play Solution

Our Plug-and-Play Solution reflects our commitment to “solution engineering.” In every project, our expert team strives to achieve optimal results while delivering high-performance services tailored to your specific requirements.

SKID Engineering

ONSITE N₂ and O₂ Plant

Self-generated N₂ and O₂ directly ONSITE.

The Possible Feature and Engineering Option:

Stainless Steel design

Ex-Protection / ATEX-Design

IP 66 / ASME / Marine Design / British Standard

Back-Up-System

Pressure Booster up to 350 bar

Remote monitoring box / Industry 4.0

CONTAINER Engineering

ONSITE N₂ and O₂ Plant

Self-generated N₂ and O₂ directly ONSITE.

We supply a full feature complete and flexible system with compressed air technology, N₂ or O₂ generation, frequency control, heat recovery, control system and visualization, including a service alarm modem.

our CONTAINER solution can be set up anywhere ON-SITE according to the customer's wishes. As a rule, no installation or building permit is required.

SHIP TO

TURKEY



N₂

Project Reference: 1343

Capacity 2.4Nm³/h @ 99.999% purity

Plug and play N₂ generator packages for use in a university laboratory in Istanbul, Turkey. Made in Germany

N₂

Project Reference: 1474

Capacity 4Nm³/h @ 99.999% purity

A Full Nitrogen package as mobile N₂ system in aviation applications for continues production of Nitrogen for government of Bangladesh, proudly made in Germany

Ship to

BANGLADESH



N₂

Project Reference: 2693

Capacity 5.1Nm³/h @ 99.99% purity

A Skid mounted nitrogen Generator with compressed air and N₂ tank with all piping used in German university, proudly made in Germany



Ship to
GHANA



O₂ Med

Project Reference: 1336

Capacity 10Nm³/h @ 95% purity

Full feature Oxygen package made to use for patients in the hospital and equipped with Oxygen filling station, proudly made in Germany, installed in Ghana,

O₂ Med

Project Reference: 1675

Capacity 2.2Nm³/h @ 95% purity

Plug and play medical Oxygen package for a small clinic in Jordan, the most reliable, user-friendly, and independent Oxygen supply, Made in Germany



Ship to

GERMANY



O₂

Project Reference: 1421

Capacity 2.1Nm³/h @ 93% purity

Not just a small and beautiful plug-and-play complete Oxygen package, but also very high performance with very low energy costs, for on-site industrial applications, Made in Germany,

N₂

Project Reference:

Capacity Nm³/h @ purity

A Full Nitrogen packag with compressed air and N2 tank with all piping used in Switzerland Labratory, made in Germany

Ship to

Switzerland



Ship to

BANGLADESH



O₂

Project Reference:

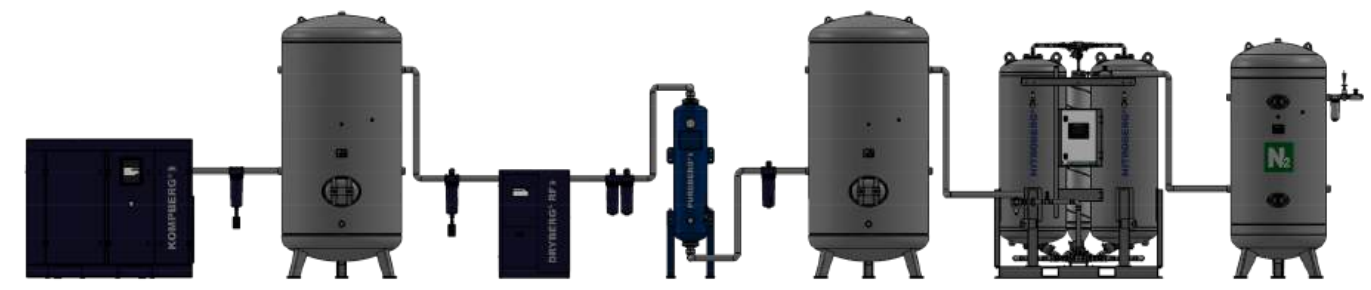
Capacity Nm³/h @ purity

Not just a small and beautiful plug-and-play complete Oxygen package, with very high performance and low energy costs, for Hospital in Bangladesh,

Made in Germany

BERG Kompressoren GmbH

Compressed Air Technology | Air Separation



BERG Kompressoren GmbH
Medienstraße 35, 47807 Krefeld, Germany
www.berg-kompressoren.de



Wir investieren in Qualität!



Management System
ISO 9001:2015

www.tuv.com
ID 9000018531