



BERG Kompressoren GmbH
Compressed Air Technology | Air Separation

PROCEEDING BEFORE THE FIRST COMPRESSORS OPERATION

It is essential to follow the rules listed below before the first operation:

- 1) Observe the instructions provided in the Manual and Warranty Book (point 6 in particular).
- 2) Remove the shipping bracket (red colour) from the motor, compressing air-end and oil tank (if shipping brackets have been installed by the manufacturer).
- 3) Depending on the type of safety button EMERGENCY STOP used, perform the following steps (acc. to point 4,5 or 6):



Use EMERGENCY STOP only for emergency compressor shutdown!

DO NOT use for daily compressor shutdown!

- 4) Install **PPFN1R4N** safety button in accordance with the following instructions and Fig.1:
(remark: installation should be performed by a person with electrical powers up to 1kV)
- 4.1) Open the control panel door (electrical box).
 - 4.2) Put elements 1 and 2 through the hole in the control panel (3).
 - 4.3) Tighten the nut (4) to the button.
 - 4.4) Install item (5) in the OFF position onto the button (shown on Fig 1).
 - 4.5) When item (5) is placed properly switch (lock) the element into ON position (locked position in the figure).
 - 4.6) Check the proper operation by pressing the button.

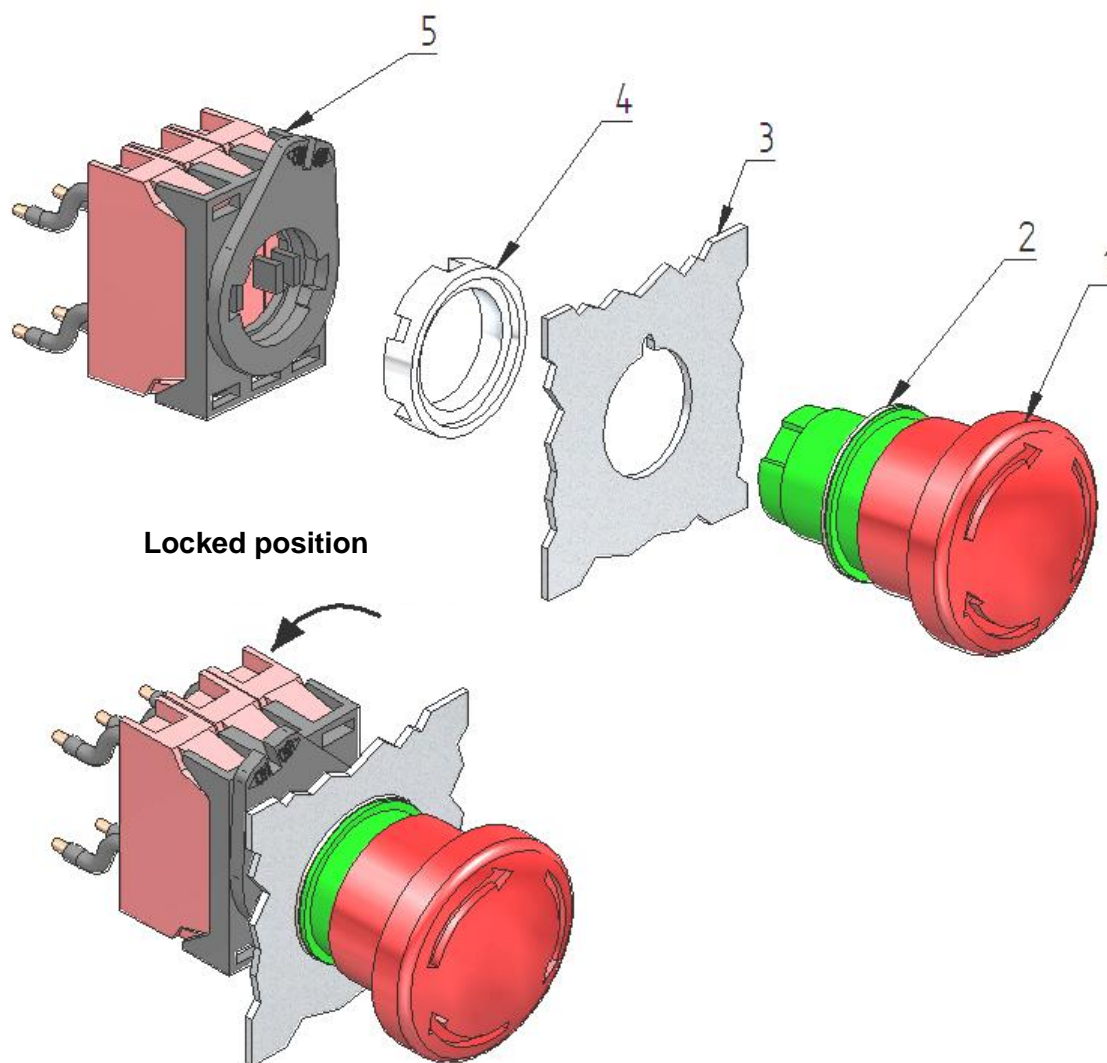


Fig.1 PPFN1R4N safety button assembly before the first operation

- 5) Install **AES** safety button in accordance with the following instructions and Fig.1, Fig.2:
(remark: installation should be performed by a person with electrical powers up to 1kV)
- 5.1) Open the control panel door (electrical box).
 - 5.2) Insert a Phillips screwdriver into the notch of the element 3; push down (towards '1' direction) by releasing the latch; remove the electrical connection (elements 3, 4) from the button mushroom cap of element 1 (towards '2' direction) - fig. 1.
 - 5.3) Put elements 1 through the hole in the control panel (5).
 - 5.4) Tighten the nut (2) to the button.
 - 5.5) Connect the electrical connection (elements 3, 4) to the button (towards '3' direction) - fig. 2.
 - 5.6) Snap the latches of the element 3 onto the corresponding cavities of the element 1.
 - 5.7) Check the proper operation by pressing the button.

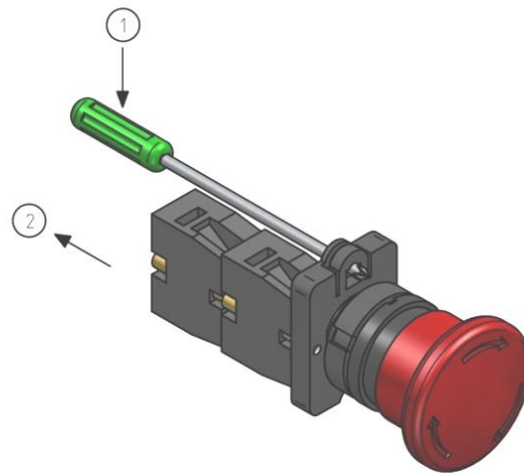


Fig.1 AES safety button disassembly

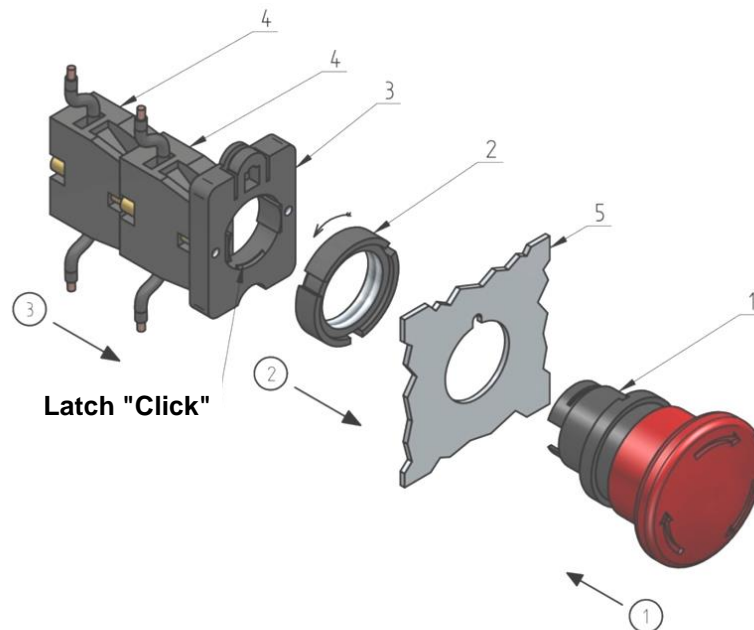


Fig.2 AES safety button assembly before the first operation

6) Install **LOVATO** safety button in accordance with the following instructions and Fig.1, Fig.2:

(remark: installation should be performed by a person with electrical powers up to 1kV)

- 6.1) Open the control panel door (electrical box).
- 6.2) Insert a flat screwdriver into the notch of the element 3; push down (towards '1' direction) by releasing the latch; remove the electrical connection (elements 3, 4) from the button mushroom cap of element 1 (towards '2' direction) - fig. 1.
- 6.3) Put elements 1 through the hole in the control panel (5).
- 6.4) Tighten the nut (2) to the button.
- 6.5) Connect the electrical connection (elements 3, 4) to the button (towards '3' direction) - fig. 2.
- 6.6) Snap the latches of the element 3 onto the corresponding cavities of the element 1.
- 6.7) Check the proper operation by pressing the button.

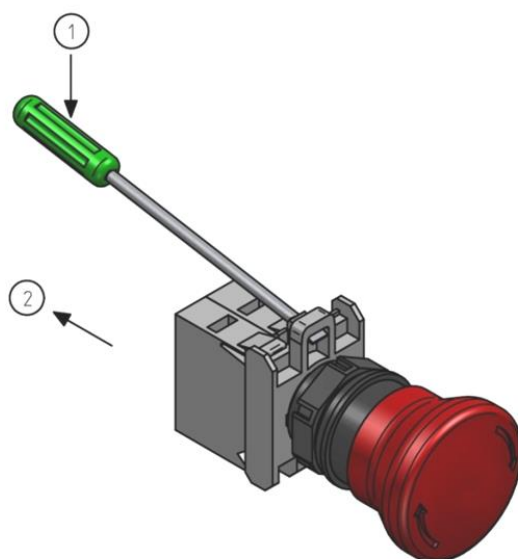


Fig.1 LOVATO safety button disassembly

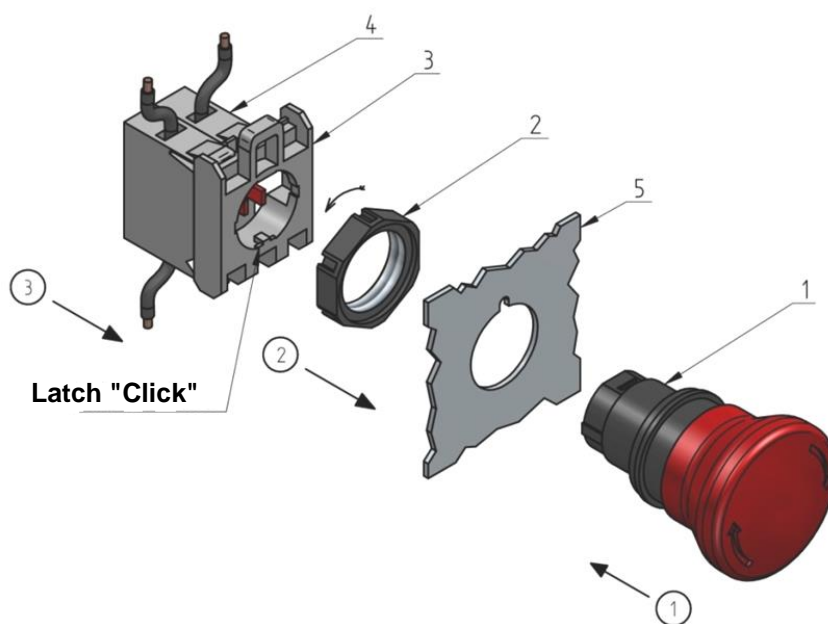


Fig.2 LOVATO safety button assembly before the first operation